



LYNFIELD
COLLEGE

NEWSLINK

NEWSLETTER 9 | 14 JUNE 2024

From Tumuaki Cath Knell

He aha te mea nui o te ao

He tangata, he tangata, he tangata

What is the most important thing in the world?

It is the people, it is the people, it is the people.

Kia ora koutou

With us having reached the end of Week 7 our students are conscious of their assessment requirements in what is going to be a very busy three weeks ahead until the end of the term. In making the best use of their learning and instruction time we are appealing to families to support our students in being in class at 9.00am for the beginning of the school day. Students should be onsite by 8.50am.

SchoolBridge App

There is a direct correlation between attendance and achievement so we encourage families to monitor their child's attendance through the SchoolBridge App. Thank you to those that are using this App to report an absence or to advise the time that you expect your child to arrive should there be a valid reason for them being late.

The Government is now also monitoring weekly attendance with a nationwide push on reducing truancy and increasing the numbers 'attending regularly (90%+)'.

Demonstrating our Korowai of values through being UPSTANDERS not BYSTANDERS

The Korowai value that we are focusing on this term is **Manaakitanga**. Specifically, *we are accepting of ourselves and others, we are compassionate, we are respectful, we are inclusive and culturally responsive and we are empathetic*. It has been of concern to hear that there have been times recently where Manaakitanga has not been demonstrated by some students. Standing by and not speaking out, or seeking help, when the words or actions of others have been hurtful is the action of a bystander. We continue to work in support of growing and strengthening our **upstanders**.

"You never really understand a person until you consider things from his point of view – until you climb into his skin and walk around in it." Atticus Finch quote in To Kill a Mockingbird, by Harper Lee.

An upstander is someone who recognises when something is wrong and takes action.

Nga mihi nui

Cath Knell

Tumuaki | Principal

IN THIS ISSUE

- Message from Tumuaki Cath Knell
- Lynfield College Production
- The Chase Lynfield College
- Auckland Central Chess Cluster Tournament
- Chamber Music Success
- Smokefree Rockquest Regional Finals
- Level 3 Geography Muriwai Beach Field Trip
- NCEA LitNum Testing
- Attendance
- Assessment Calendar
- Time to return 2023 Prize-giving Cups & Trophies
- Wearing Correct Uniform
- Sports Scene
- Uniform & Stationery Shop
- Temporary Shop Closure
- IPUTI Wednesdays
- Community Notices: Watercare Services Puketapapa Kite Day Jammies for June
- Holiday Programmes: Rainbow Journey Tectorium Events

COMING EVENTS

Wed 19 – Saturday 22 June

PRODUCTION WEEK

Tuesday 25 June

TALONOA EVENING

Friday 28 June

MATARIKI HOLIDAY

Wednesday 3 July

WINTER SPORTS PHOTOS

Thursday 4 July

MT MAUNGANUI EXCHANGE

Friday 5 July

TERM 2 ENDS

Lynfield College Production

Lynfield College proudly presents their annual school production HAIRSPRAY! Featuring a live band and a huge cast of singers, dancers, and actors who are ready to get their groove on.

About Hairspray:

Hairspray, winner of eight Tony awards, is a family-friendly musical- set in 1960s Baltimore - with laughter, romance, and seriously catchy songs. With a whole load of Rhythm & Blues vibes, and a huge heap of Lynfield College talent, Hairspray is a must see! Based on the cult 1988 John Waters' film, Hairspray features timeless hits, including "Good Morning, Baltimore!", "The Nicest Kids in Town" and "You Can't Stop the Beat". Hairspray takes the audience along on a joyous, feel-good musical ride that will have them tapping their feet and reaching for a bumper can of "Ultra Clutch" hairspray! Welcome to the sixties, Lynfield! Don't miss the fantastic, funny and fabulous musical sensation. Book your tickets today! *Some mature content. Recommended for 15+ age group.*

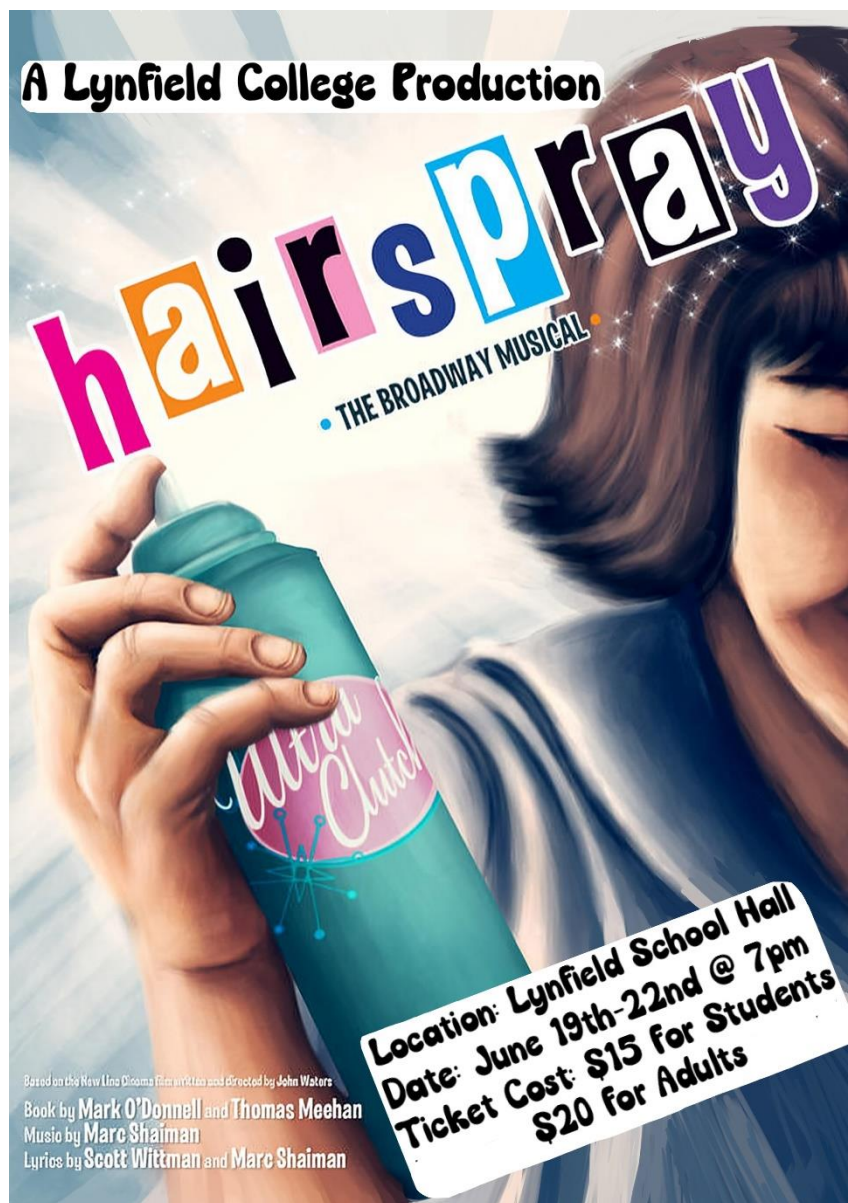
DATES

Wednesday 19 June 2024 - Saturday 22 June 2024

LOCATION

Lynfield College School Hall

Book your tickets online at Try booking.com: <https://www.trybooking.com/nz/events/landing/12327>



The Chase Lynfield College

Recently the Academic Captains hosted The Chase, an event inspired by the TV show. We had student teams compete against each other across lunchtimes to answer questions in quick fire rounds. After several competitive and lively rounds, we had our student finalist team compete against a teacher team determined to make it to the top! Our Year 13 team managed to claim victory in a tight game, 10-9! We're immensely grateful to all the students and teachers who participated in this event to make it a success. Keep any eye out for Junior and Senior Quizzex next term!

Emili Biswas, Assistant Academic Captain, 2024



Auckland Central Chess Cluster Tournament

On Friday 7 June our school participated in the Auckland Central (senior) Chess cluster tournament. Awards/participation are listed below.

Ayaan Vasudeva (6.5 out of 7 points) 1st individually in the tournament, invitation to the champions trophy nationals in Wellington, Distinction certificate & chess book.

Evan Huang (4.5 out of 7 points) 12th individually in the tournament, Excellence certificate.

Zack Jones (4 out of 7 points) 16th individually in the tournament, Credit certificate.

Izak van Niekerk (4 out of 7 points) 17th individually in the tournament, Credit certificate.

Sia Pai (4 out of 7 points) 21st individually in the tournament, Credit certificate.

Players: Mahe Chaudhary (28th), Hetansh Trivedi (29th), Neil Sarma (30th), Bill Li (32nd), Ian Zhang (42nd), Sultanbeer Singh (43rd). Our school came 3rd Overall in the tournament. (Report by Ayaan Vasudeva 10JSP)



<https://tornelo.com/chess/orgs/nzjunior/events/auckland-central-cluster-tournament-senior--6/standings/section/senior>

Chamber Music Success

Lynfield College entered three groups in the annual NZ Chamber Music contest, with all three playing their pieces extremely well. Saxes and Waynes played 'Tis a Silly Place' written by our own Mr C Isdale. The String Trio played an arrangement of a Mozart Divertimento, and the Flute Quartet 'Four Sparrows' played an original piece written by Year 13 student Miyu Okuwaki called *Four Sparrows and a packet of chips*.

While none of the groups made it into the final of the competition, Miyu and the Four Sparrows took home the award for Best Performance of an Original Composition. Congratulations Miyu and the Sparrows.

Smokefree Rockquest Regional Finals

Auckland Girls Grammar School, Saturday 15 Jun 7pm

This Saturday night we have three bands competing at the Smokefree Rockquest Auckland Central Regional Final.

The Horizon, Age Last and **Soular** will all perform 2 original songs on the night and try to move through to the next stage of the competition. Tickets can be bought at [eventfinda](https://www.eventfinda.co.nz), or on the door. Hope to see you there!



3GEO Muriwai Beach Field Trip

Level 3 Geography students made their annual field trip to Muriwai Beach to collect data to explain why there are Dunes on one side of the Headland (Otakamiro Point) at Muriwai Beach, but not on the other side at Maukatia Bay. On the trip students experienced the windy west coast weather, saw the features like the arch, cave and pillow lava that they have been looking at in class and successfully collected all the information to complete their research. We would like to thank Mr Appleby and Miss Lote for coming with us on the trip being our drivers, keeping us safe and chief photographers!



NCEA LitNum Testing

Congratulations!!

The NCEA LitNum testing was held over weeks 4 and 5 for selected Year 10 and 11 students.

Of particular note were the Year 10 students who sat the tests. They were outstanding in the way they managed their time, were prepared and the effort they put into each opportunity. Congratulations to you all for the effort and organisation you put in to these tests.

There is another opportunity in September for those students who were not offered it this time, or who are nearing the end of their education journey and require this for their Level 2 and 3 NCEA Certificates.



Attendance

We are working to improve regular attendance at school (students attending at least 90% of the time) to meet the Ministry of Education's attendance goals. 90% attendance is having less than 5 days away from school each term.

To help caregivers keep track of their child's attendance we have started emailing out weekly summaries. Alongside this, our aim is to decrease the number of unjustified absences. These are indicated on the weekly summaries by unknown ? codes, and unjustified U.

If you have any queries about your child's attendance or would like to explain an absence please contact our Attendance Officer Karen Grant at absence@lynfield.school.nz

Download our SchoolBridge App which makes it easy to report any absences plus gives you easy access to things like reports, assessment calendars, sports draw <https://shorturl.at/c9U1w>

Assessment Calendar

We now have an assessment calendar for Year 12 and 13 students that is personalised for each student. This can be found either through our SchoolBridge app or signing into SchoolBridge on any device <https://lynfield.bridge.school.nz/>

Returning 2023 Prizegiving Cups and Trophies

Please return all cups and trophies presented at last year's prizegivings to the main College Reception desk.

It is NOT necessary to clean the cups before returning them.

WE WOULD LIKE ALL CUPS / TROPHIES TO BE RETURNED BY THE END OF TERM 2.

Uniform

We have been working with our Hui mai teachers to ensure that students who need access to uniform have been supported. It's now six weeks into the winter term, and it's great to see most of our students looking warm and smart in their correct uniform items.

Our procedure is, for students who don't have a correct uniform item on a particular day, to bring a note from home and come to get a uniform pass from the Deans or Deputy Principals before school. To help caregivers with this, it can now be done through the Schoolbridge app. Click on Permission Slips/Forms, then start a new form.

Students who don't follow this procedure will have their item removed to be collected from the Deputy Principals at the end of the day. If a student continually doesn't wear correct uniform, parents will be contacted and there will be further consequences.

Thank you for your support.

Sports Scene

UNIFORM CARE

To help us continue to provide quality uniforms for our sports teams it is really important that these simple washing instructions are followed for all our sporting garments:

Cold wash, NO dryer, NO iron

PREMIER SPORTS JACKETS

Students are not to wear the Premier Sports Jackets around school as they are **not** part of the school uniform. This also aids in our efforts to maintain their quality and minimise damage so that we can preserve them for future sports leaders to wear at their games. Jackets seen being worn around school will be taken off the students.

TEAM TALK

FOOTBALL

Our Football 1XI boys team have started their Knockout Cup season with a 4-1 win over Dilworth. For the 2nd Round fixture, our team has drawn Rosmini at home which will be a tough test for our team. This match is scheduled to be played on Tuesday 18th June on the Lynfield #1 Pitch and it would be great to have as many supporters cheering our team on from the sidelines as possible.

The Football 1st XI Girls have had a difficult start to the season this year. Despite some tough results, the team put together some great performances against the best teams in the grade including a 1-0 win over Long Bay College. Looking forward, the team have some key matches coming up which we will need to take points away from and the girls are eager to get some more victories.

NETBALL PREMIER 1

So far, this netball season has been fun connecting with our new and previous players. It's great to see each individual player's progress and development as well as our team's progression overall. We have faced and overcome many obstacles so far this season and are ready to face any more that pop up. But we are working hard to help improve our game play. We are determined to get to where we want, and look forward to only gaining knowledge and experience throughout the rest of our journey as a team. Our time and dedication from our coaches and manager have not gone unnoticed. We hope to take it out in our upcoming Mt Maunganui exchange followed by our Winter Sports Week/UNISS tournament later this year.

Agnes Wulf (Captain)

BADMINTON

Our Badminton B grade Girls have had an incredible start to the season. The team have convincingly won all of their matches so far and are looking forward to some tough matches and finals in the coming weeks.

Badminton B Grade Boys:

This season has been filled with excitement and exhilaration as our team competed against many challenging yet admirable opponents. We've had many tight scores, but we still managed to grasp every opportunity we had, winning all of our games so far. Currently, our team stands in the equal on points for 1st amongst the many competitive schools across central auckland, with a top of the table matchup in the last week of competition which could determine the winners of the league. For the remainder of the season, we are determined to give our best for all the games, to enjoy every match we play and aim to achieve a gold medal.

Danny Dong 13WGT

Suburbs New Lynn CRICKET CLUB

Thanks to **TAB New Zealand** For their support

Women and Girls CRICKET WINTER PROGRAMME

8-week customised programme designed by our new Women's Premier Coach Christiaan Theron. Limited spaces available, so book promptly.

Commences 10th July
Wednesdays:
4-5.30pm U13's
5.30-7.00pm U16's
7-8.30pm Premier Squad

SUBSIDISED PROGRAMME
8 Weeks Starting 10 July
\$80 for all 8 weeks

For further information email our manager@suburbsnewlynnccricket.com or register here: <https://www.playhq.com/new-zealand-cricket/register/403115>

Uniform & Stationery Shop

TEMPORARY SHOP CLOSURE

The Uniform and Stationery Shop will be closed on Monday 14 and Tuesday 15 October 2024.

We will be open as usual from Wednesday 16 October.

HOURS

The Uniform and Stationery Shop is open to all students on site for their uniform and stationery needs during interval and lunchtime Mondays to Thursdays, and on Fridays before school at 8am and interval.

We are not open on Saturday and Sunday, Teacher Only Days or the between term holidays.

Parents can attend the shop at the following times:

Monday – Thursday: 10.00am – 12.00pm and 12.30pm – 1.30pm

Friday: 8.00am – 11.30am

ONLINE ORDERING

Online ordering is available through our website <https://www.lynfield.school.nz/shop.html>. Payment can be made by direct credit or credit card and students onsite are able to collect the items from the Shop during the above times.

Stationery packs are available in the shop and online for year 9 students. Stationery lists for all other year levels can be found on our website <https://www.lynfield.school.nz/site/lynfieldcollege/files/Stationery-Lists-2022.pdf> and all stationery items on the lists are available for purchase at the Uniform and Stationery shop.

For any further queries please email Alys Higgs at uniformshop@lynfield.school.nz

RETURNS POLICY

We require a purchase receipt and tags to still be in garments to process returns. Please be aware that we can only return items up to 90 days from the date on your receipt.

Lost Property

If your child has lost uniform items, please ask them to check the Lost Property bin outside the Uniform Shop

PLEASE REMEMBER TO NAME YOUR CHILD'S UNIFORM.

Laundry Markers can also be purchased from the uniform and stationery shop.



Young Māori & Pacific Pride Leaders present...

IPU TI

WEDNESDAYS

WEEKLY ACADEMIC WORKSHOP

- Unfinished work?
- Due dates looming?
- Need help?

3:15PM - 4:30PM

JOIN US IN I2/I3 (END OF CORRIDOR IN THE UPPER GYM)

Open to all students!



MATARIKI FESTIVAL 2024

PUKETĀPAPA MANU AUTE KITE DAY

FREE

SUN 16 JUNE 11AM-3PM

Rain date Sunday 23 June

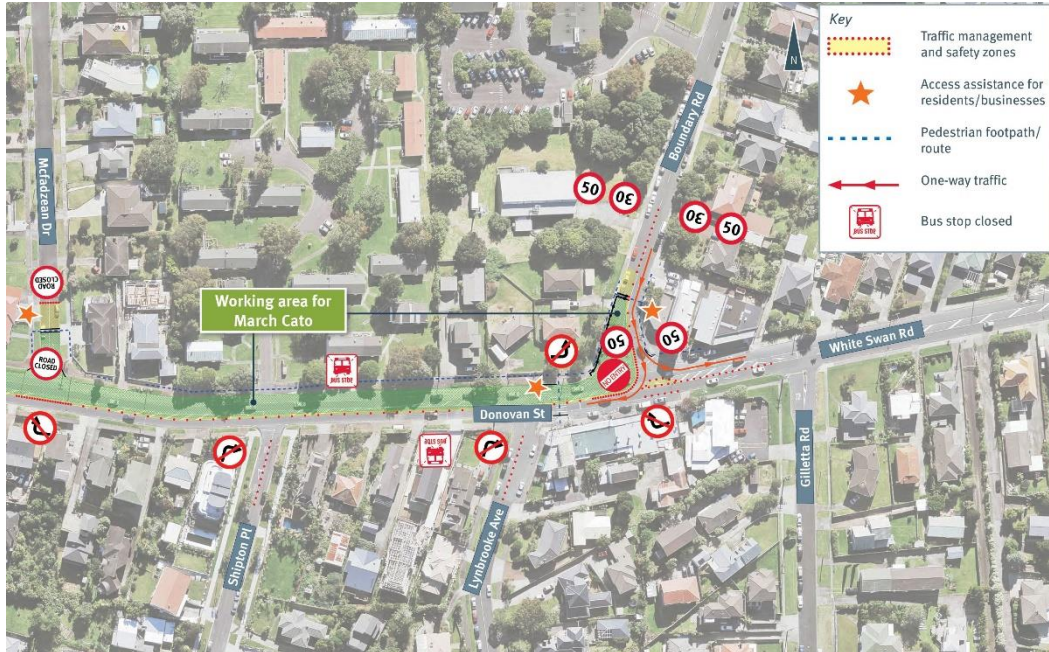
Summit of Pukewiwi / Mt Roskill
1109 Dominion Rd, Mt Roskill

Tupuna Maunga Authority Puketāpapa Local Board

Community Notices

Watercare Services - Huia 1 Watermain - Upcoming work on Donovan Street and Boundary Road

From approximately mid-June 2024 until 6 July 2024 Watercare Services Limited will be working in the area shown on the map below. Boundary Road will be closed for the two weeks of the school holidays from Saturday 6 July until Sunday 21 July 2024. This is so we can undertake chamber connection works and lay the pipeline past the intersection of Boundary Road/White Swan Road. Thank you for your patience. **Please note: No right turn from White Swan Road into Boundary Road from Monday 17 June.**



JAMMIES FOR JUNE

Join Dame Valerie Adam's Jammie Army! If you would like to donate new pyjamas for children who may not have access to them this winter, please drop them off at Lynfield College reception, or check this website for further information and options. <https://www.jammiesforjune.org.nz/>

AHOI!
Proudly supported by
InsideOUT Kōaro and
Rainbow Youth

**30th September
to 4th October
2024**

**RAINBOW AND TAKATAAPUI
5 DAY SAILING PROGRAMME**

HAURAKI GULF/AUCKLAND
15-21 YEARS
NO EXPERIENCE NEEDED
\$1,575 P/P
SCHOLARSHIPS AVAILABLE
FOR MORE INFO AND TO APPLY

<https://www.nz-sailingtrust.com/rainbow>

techtorium®
NEW ZEALAND INSTITUTE OF
INFORMATION TECHNOLOGY

0800 529 7523 www.techtorium.ac.nz

WHAT'S COMING UP!

OPEN DAY
July 6th, 10:00am - 1:00pm

PASIFIKA IN TECH
August 14th, 6:30pm - 8:00pm

GIRL POWER IT
August 30th, 10:00am - 2:30pm

**We look forward to
seeing you!**

Contact your school Careers
department for further information

20 YEARS ANNIVERSARY